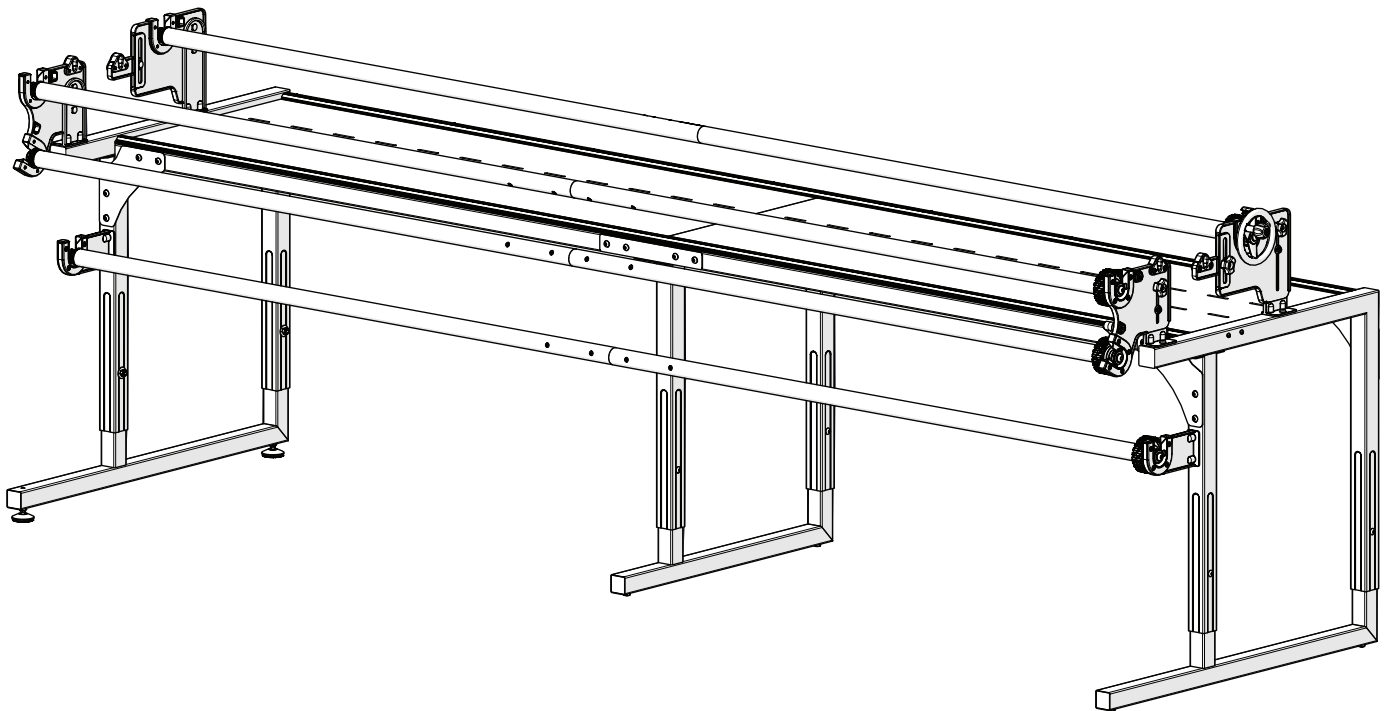


Q'nique Frame

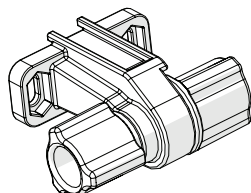
Task 5: Tension the Long Belt



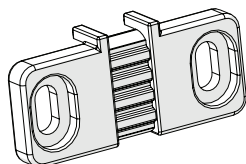
Task 5: Tension the Long Belt

Parts & Tools Needed:

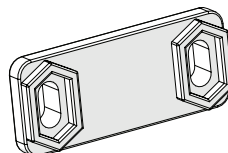
Belt Tensioner



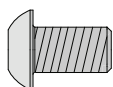
Back Belt Clamp



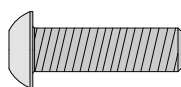
Front Belt Clamp



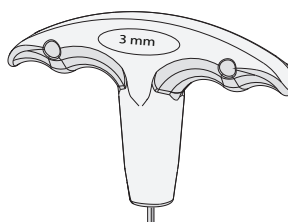
SBHCS
M5 x 10 mm (x2)



SBHCS
M5 x 20 mm (x2)



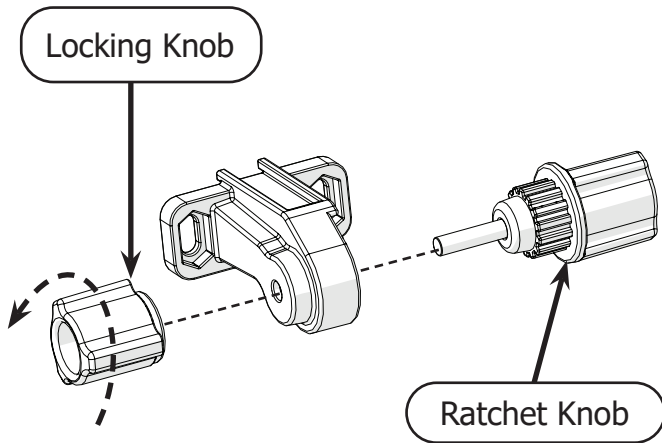
T-Handle Allen
Wrench 3 mm



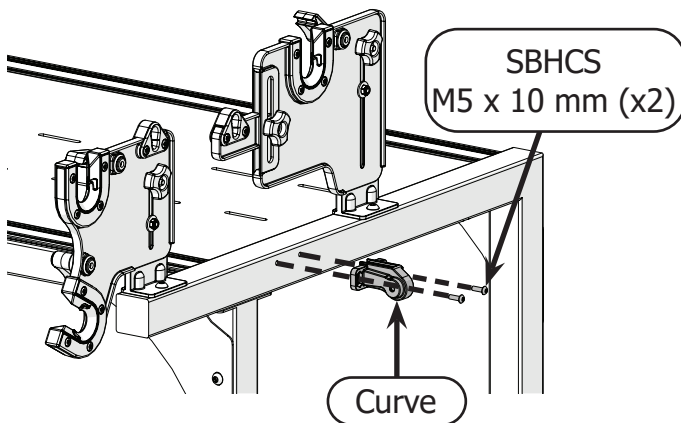
Instructions

The long belt allows QuiltMotion to move horizontally across the frame. Take the following steps to tension the long belt across the frame:

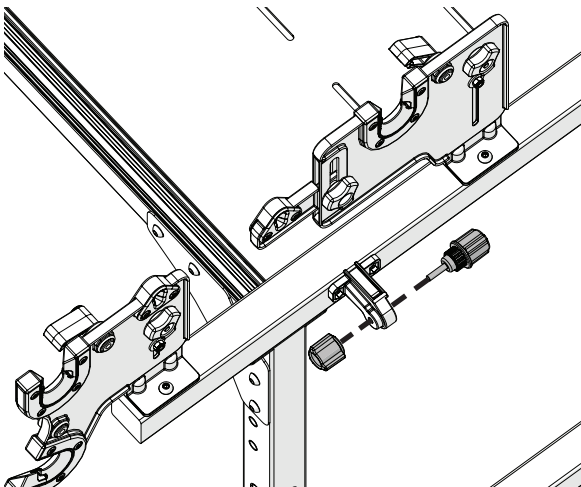
- 1 Turn the **locking knob** of the belt tensioner counter-clockwise to loosen and remove both the locking knob and the **ratchet knob**.



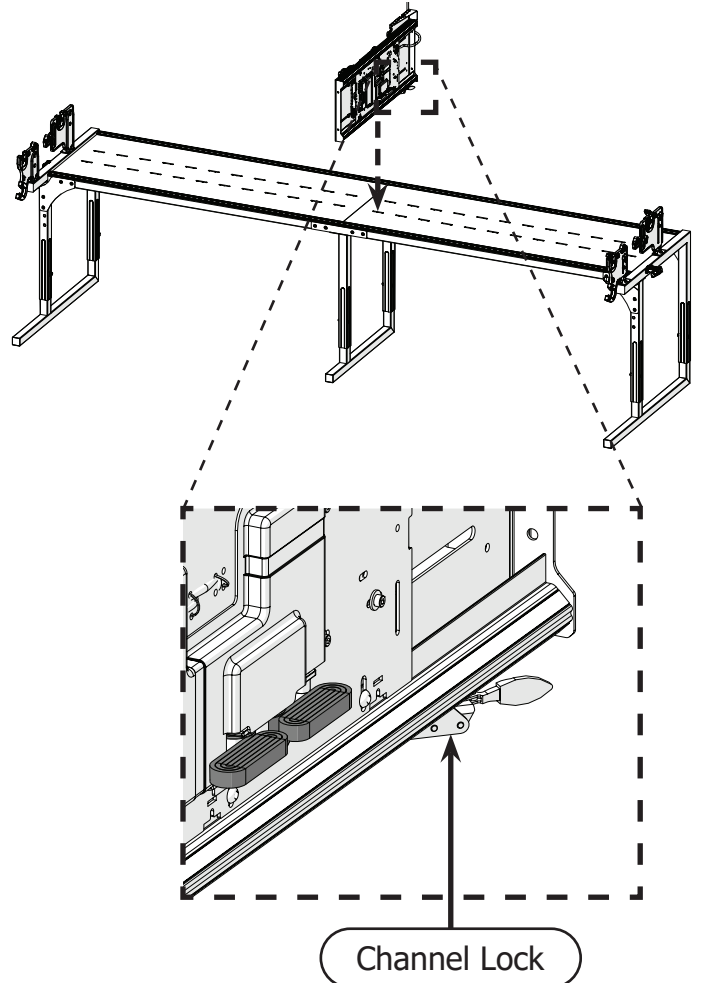
- 2 Attach the tensioner to the right side of the frame so the **curve** points down. Secure with two **M5 x 10 mm SBHCS** and the 3 mm Allen wrench.



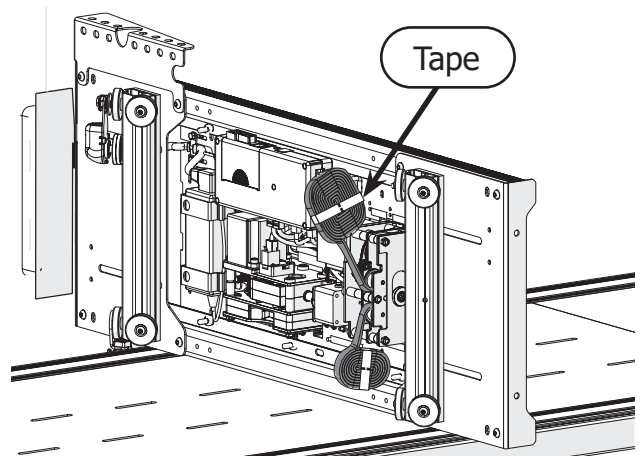
- 3 Screw the ratchet and locking knobs back onto the tensioner.



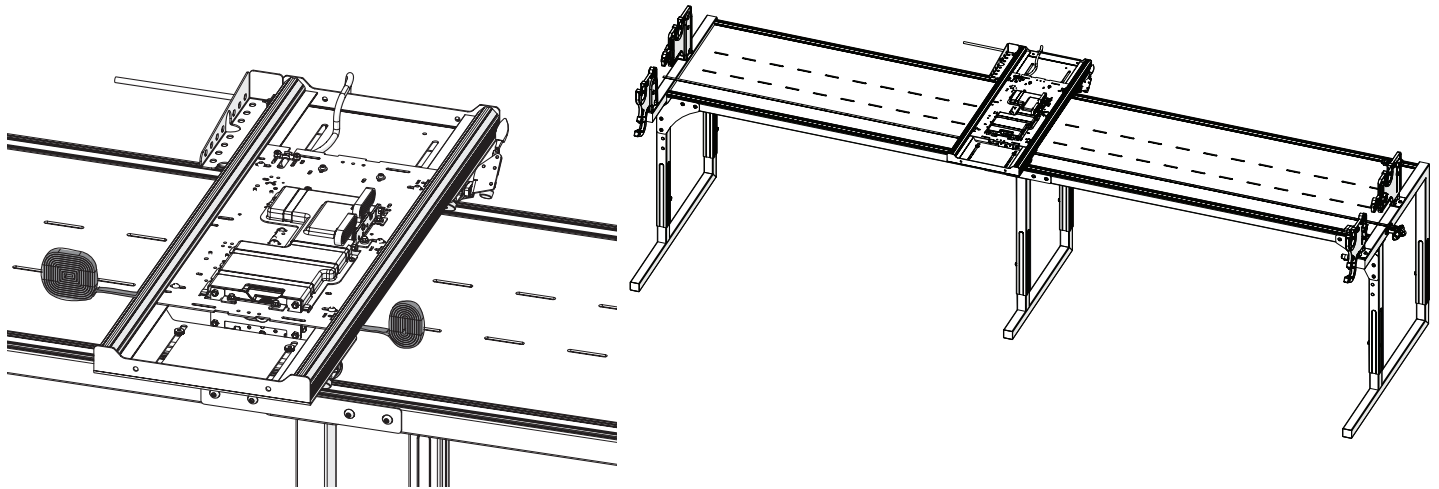
- 4 Place the bottom carriage on its right side so that the **channel lock** is behind the rear track.



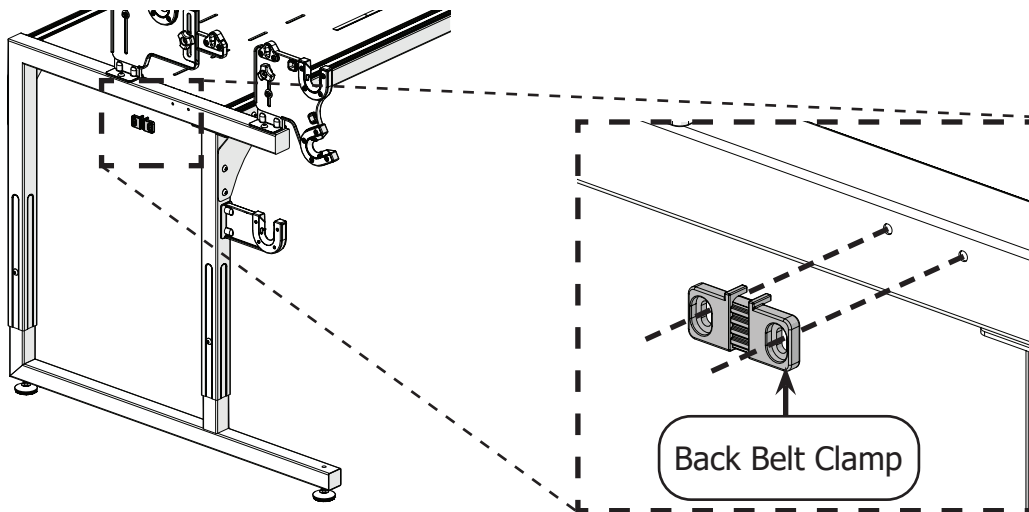
- 5 Cut the **tape** that is holding the long belt coils together and unroll several inches of each end of the belt.



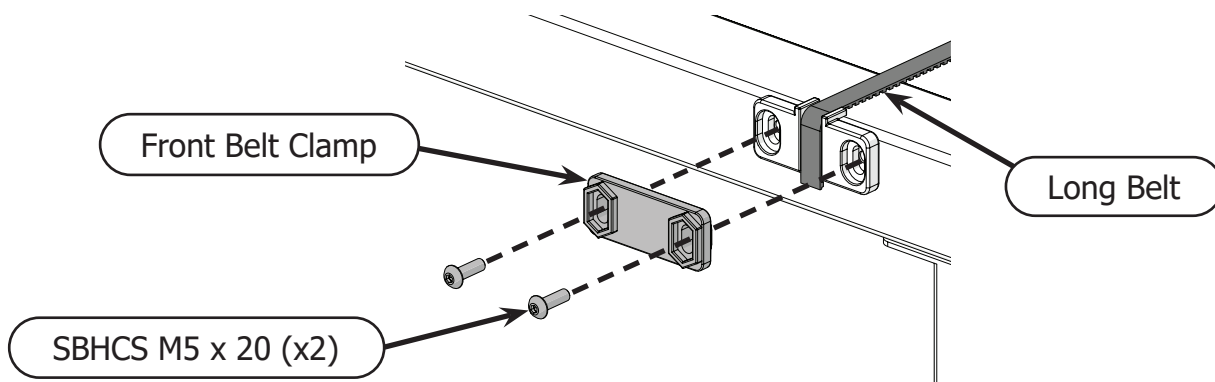
- 6 Lay the carriage flat with the wheels on the tracks and finish unrolling the long belt.



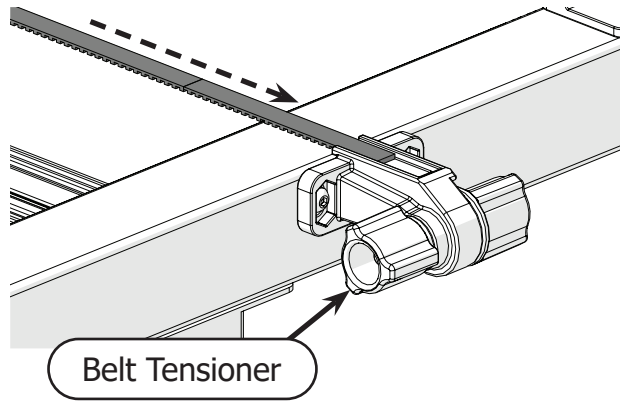
- 7 Place the back belt clamp on the left side of the frame so that the holes align with the holes in the frame.



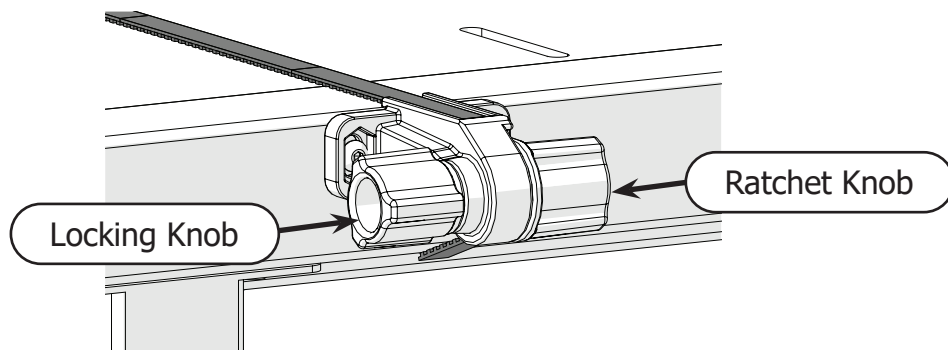
- 8 Drape the long belt over the back belt clamp, making sure the end of the belt goes past the bottom of the clamp. Use two **M5 x 20 mm SBHCS** and the 4 mm Allen wrench to attach the **front belt clamp**.



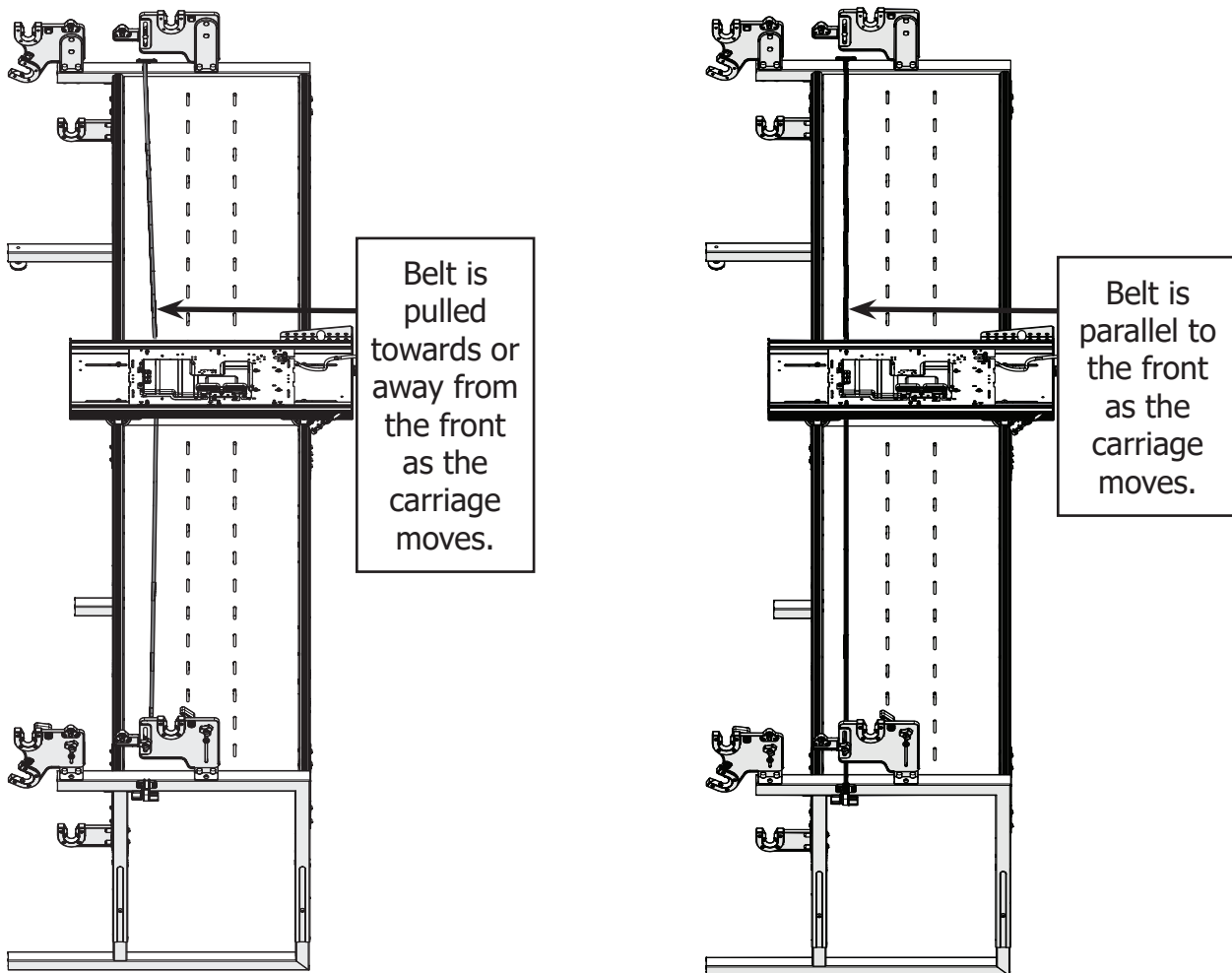
- 9 Feed the other end of the long belt into the top of the **belt tensioner** on the right side of the frame.



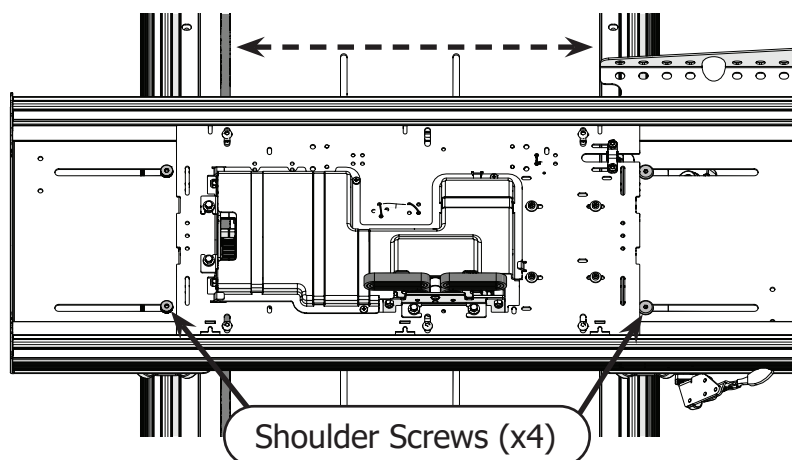
- 10 Turn the ratchet knob to pull the extra belt length through the tensioner until the belt is tight across the frame. Turn the locking knob to lock it in place.



- 11 Once the belt is tight, slide the bottom carriage across the frame. Watch the belt closely for any bowing.



- 12 If the belt is bowing, use the 4 mm Allen wrench to loosen the **shoulder screws** that attach the wheel bases to the carriage. Adjust the carriage on the wheel bases until the belt is straight and then re-tighten the shoulder screws.



Congratulations! You have completed Part One of this manual.

If you're setting up QuiltMotion on a quilting machine that is not yet assembled:

- Complete the steps in Part Two of your machine's instruction manual.
- If your machine manual is not broken into parts, follow the directions to install and align the machine wheels. Then continue onto Part Two of your QuiltMotion manual.

If you are installing QuiltMotion with a fully assembled quilting machine or a domestic sewing machine on a fully assembled top plate, continue to Part Two of your QuiltMotion manual.

If you will be using a domestic sewing machine and you have not yet assembled your top plate, do so now. Then continue onto Part Two of your QuiltMotion manual.