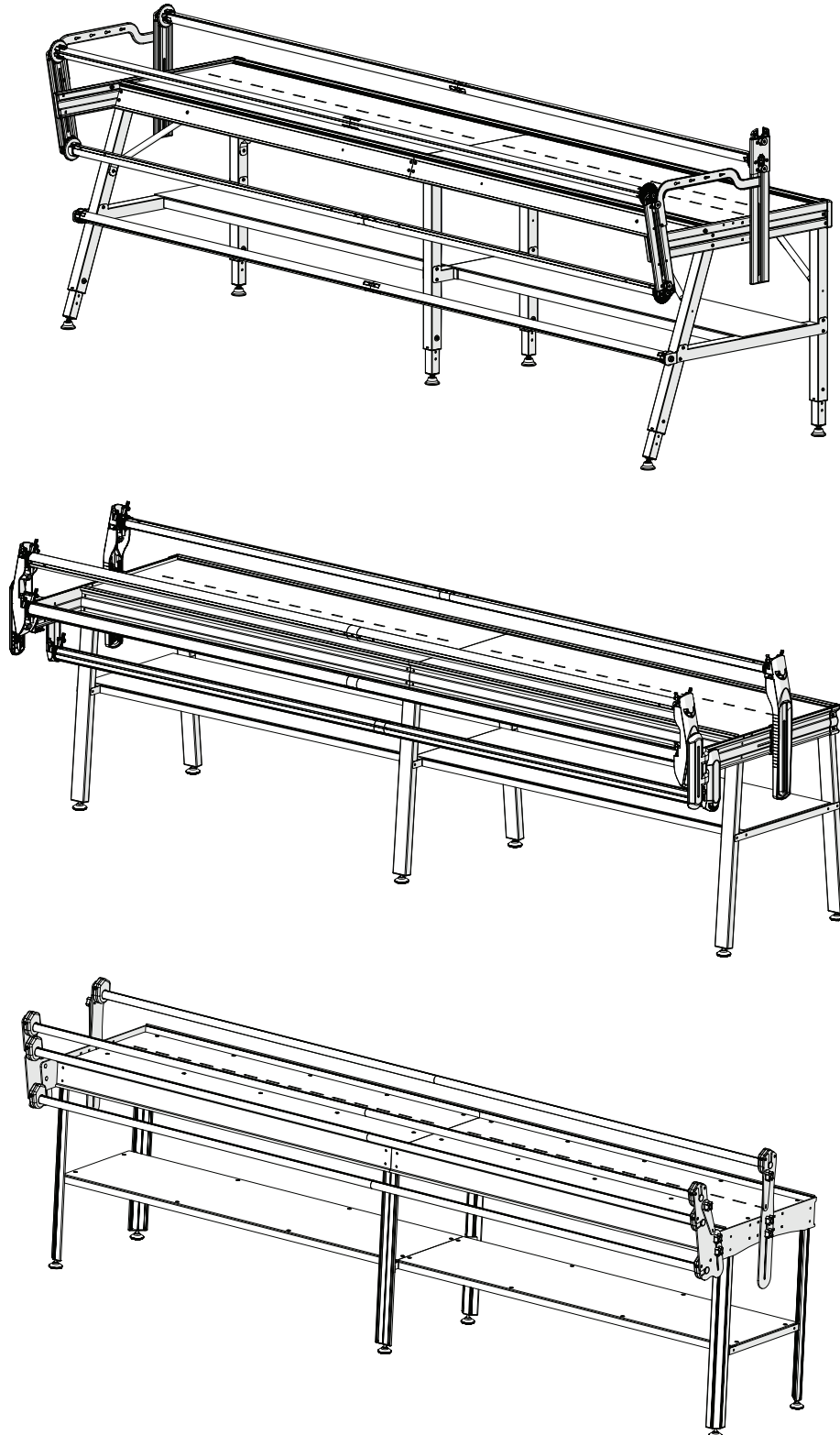


GQ, Pinnacle, and Next Generation Frames

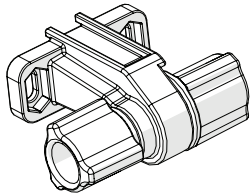
Task 5: Tension the Long Belt



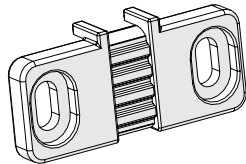
Task 5: Tension the Long Belt

Parts & Tools Needed:

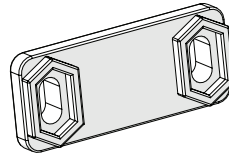
Belt Tensioner



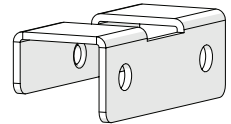
Back Belt Clamp



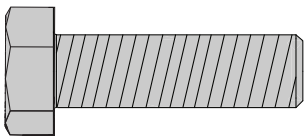
Front Belt Clamp



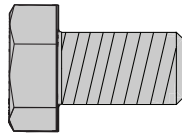
NG QM Belt Bracket



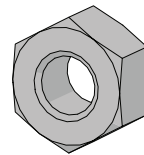
Hex Bolt
M6 x 20 mm (x2)



Hex Bolt
M6 x 10 mm (x2)



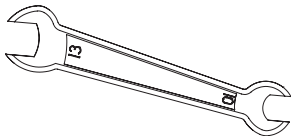
Hex Nut M6 (x2)



L-Shaped Allen
Wrench 3 mm



Open-end Wrench
10 mm & 13 mm

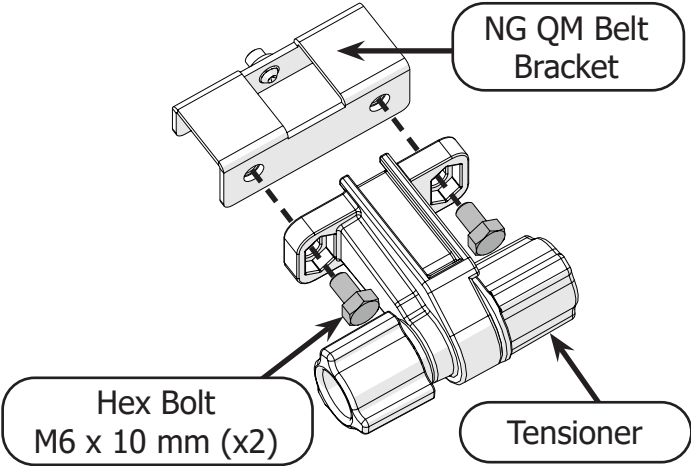


Note: All three frames use the same parts and follow the same instructions. The images in this task show the GQ Frame.

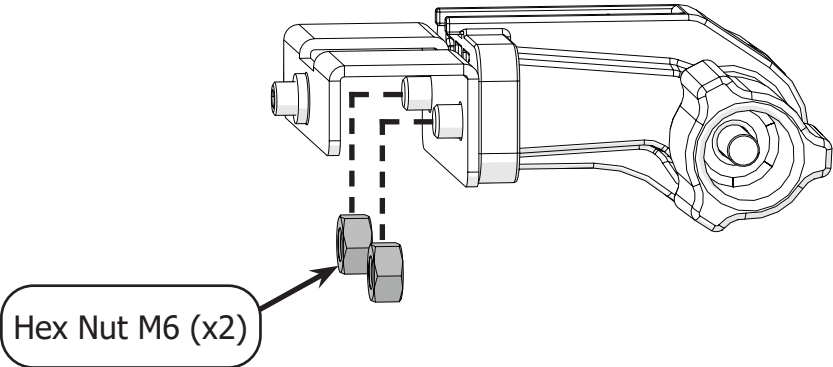
Instructions

The long belt allows QuiltMotion to move horizontally across the frame. Take the following steps to tension the long belt across the frame:

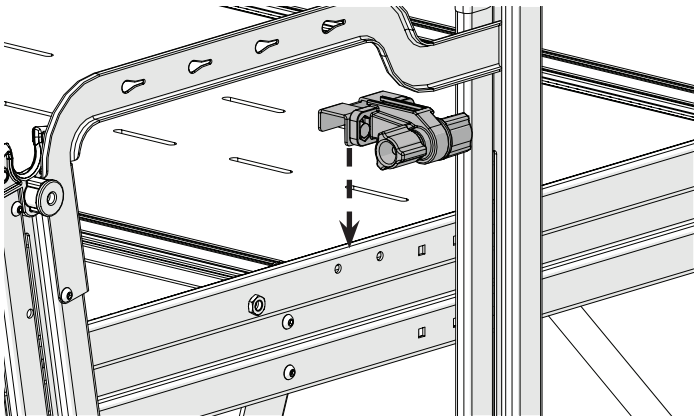
1 Use the two **M6 x 10 mm hex bolts** to attach the **tensioner** to the **NG QM belt bracket**.



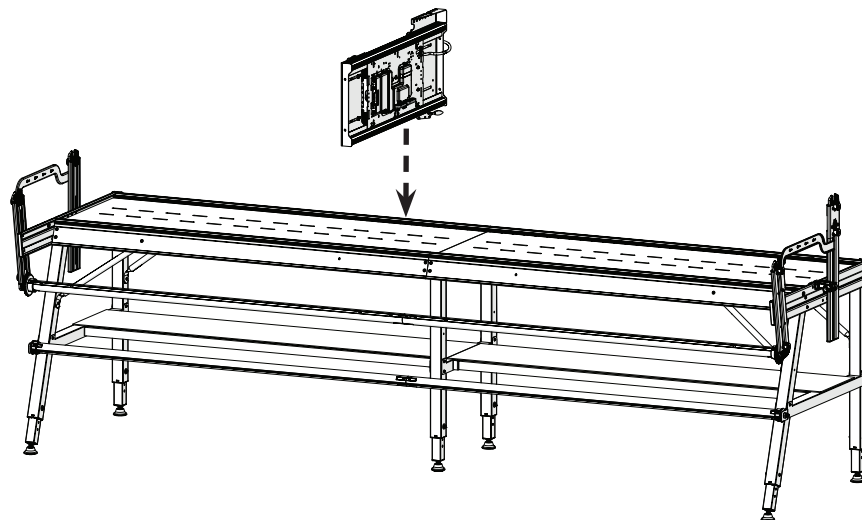
2 Use the two **M6 hex nuts** and the 10 mm open-end wrench to tighten the tensioner to the bracket.



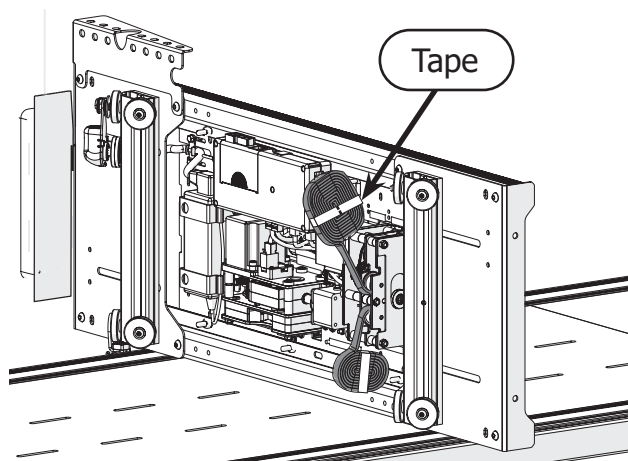
3 Place the bracket on the right side of the frame near the front. Do not tighten in place at this time.



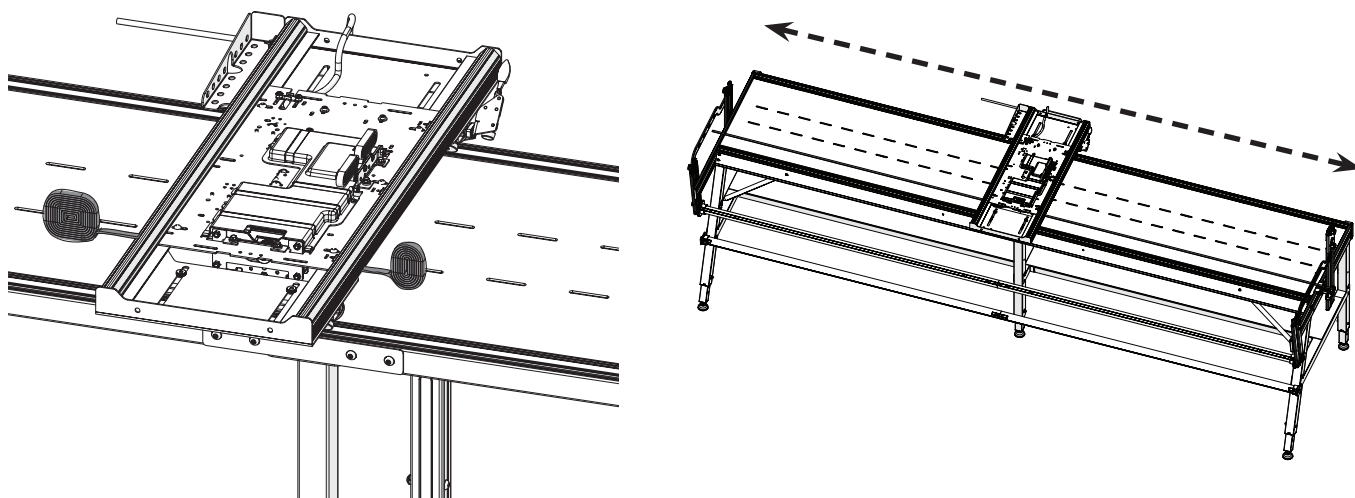
- 4 Place the bottom carriage on its right side so that the **channel lock** is behind the rear track.



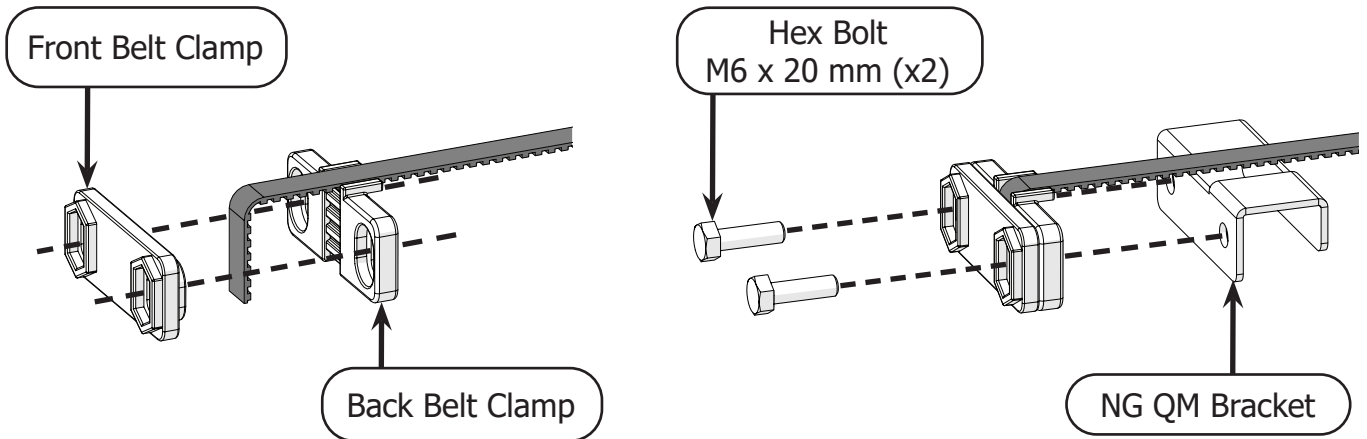
- 5 Cut the **tape** that is holding the long belt coils together and unroll several inches of each end of the belt.



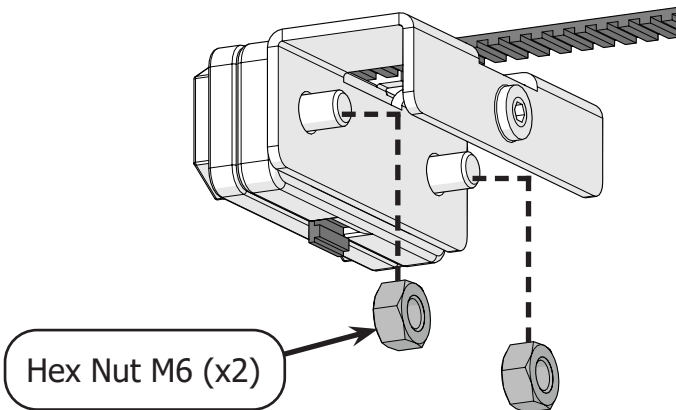
- 6 Lay the carriage flat with the wheels on the tracks and finish unrolling the long belt.



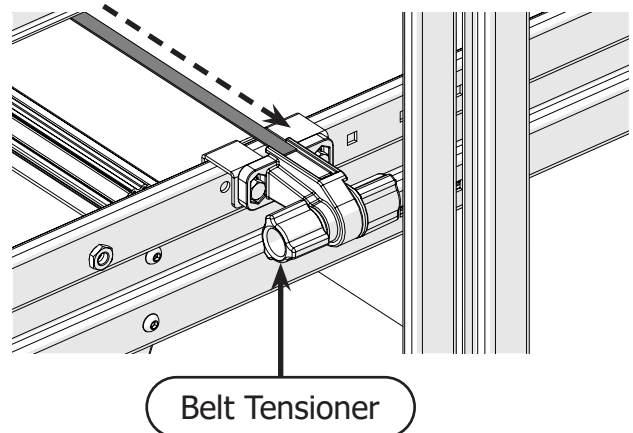
- 7 Place the left end of the long belt in between the **front and back belt clamps**. Connect the clamp and belt to the **NG QM bracket** using the two **M6 x 20 mm hex bolts**.



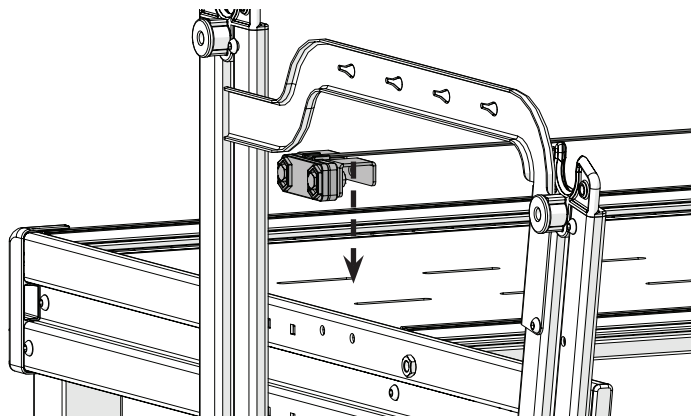
- 8 Use the two **M6 hex nuts** and the 10 mm open-end wrench to tighten the clamp to the bracket.



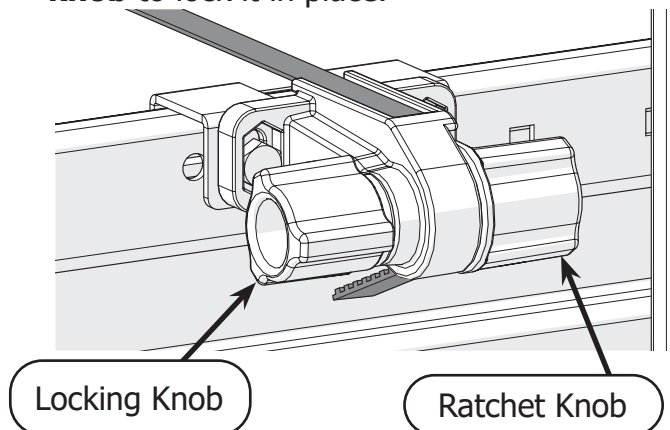
- 10 Feed the other end of the long belt into the top of the **belt tensioner** on the right side of the frame.



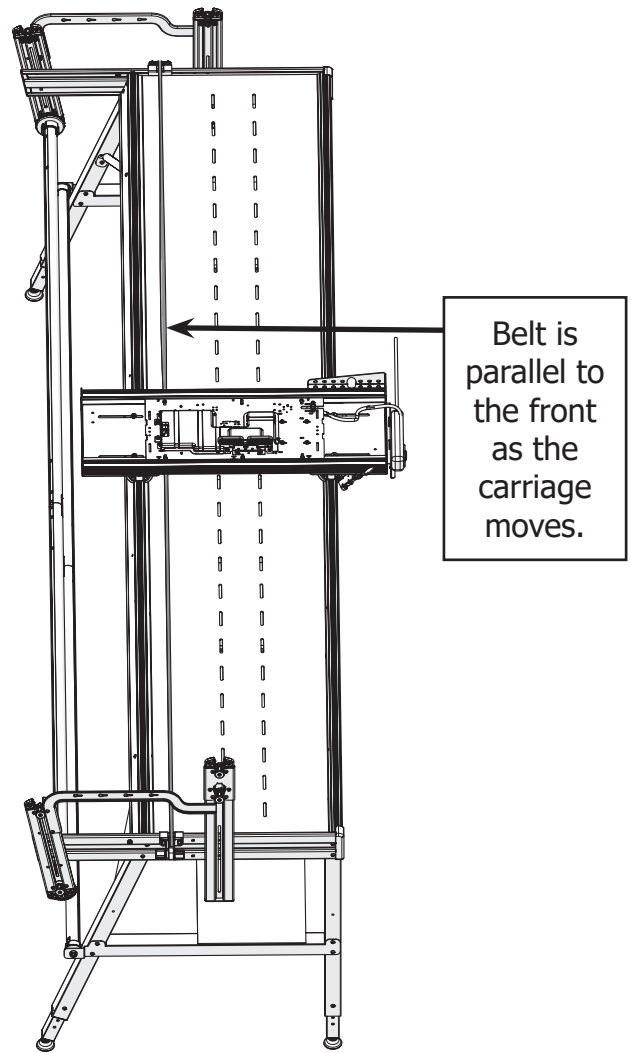
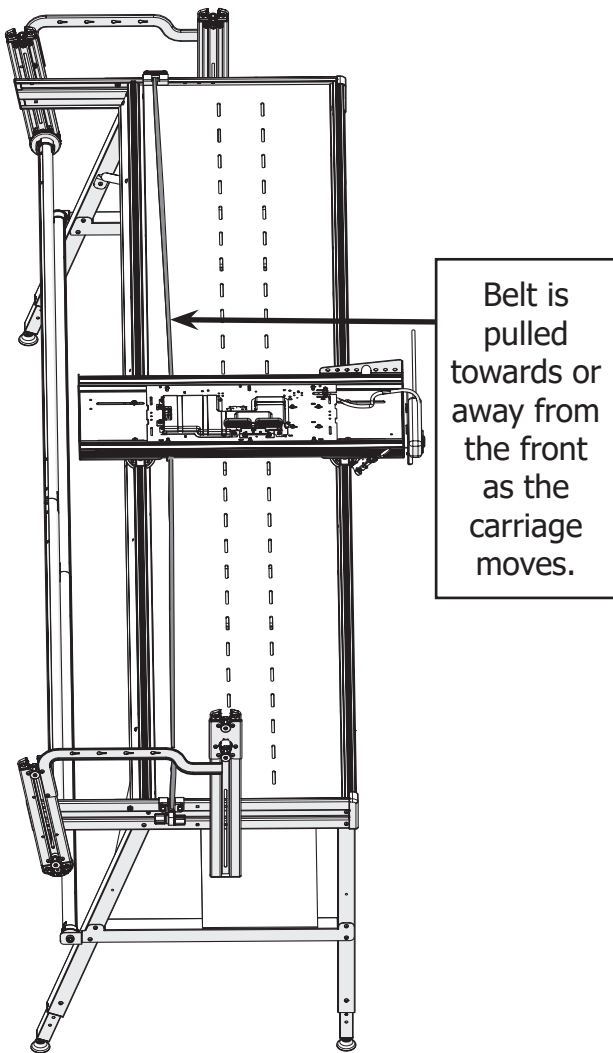
- 9 Place the bracket on the left side of the frame near the front. Do not tighten in place at this time.



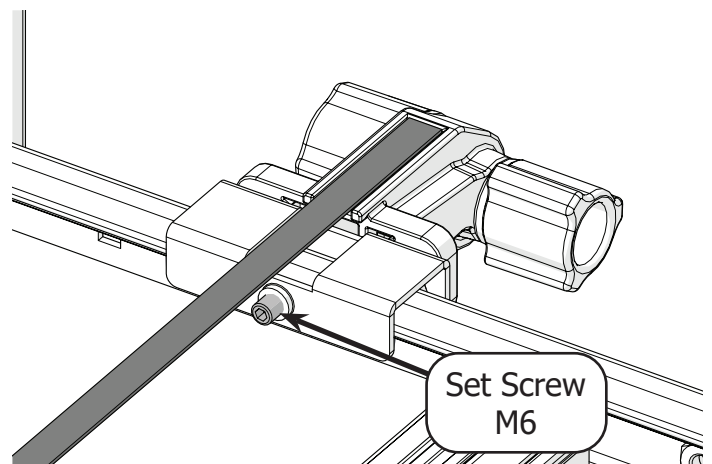
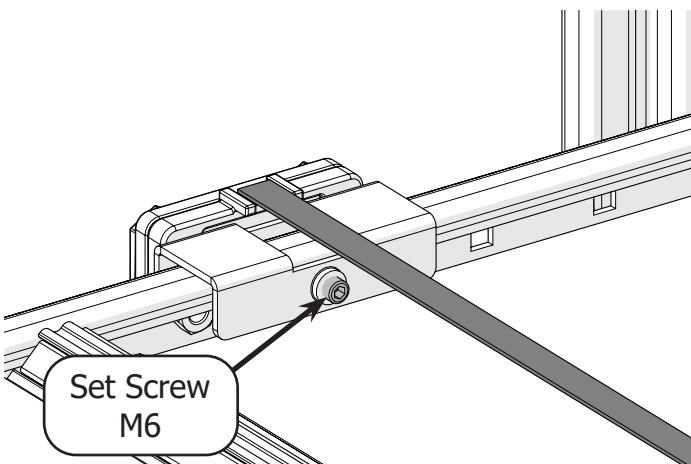
- 11 Turn the **ratchet knob** to pull the extra belt length through the tensioner until the belt is tight across the frame. Turn the **locking knob** to lock it in place.



- 12 Once the belt is tight, slide the bottom carriage across the frame. Watch the belt closely for any bowing.



- 13 If there is bowing, reposition the brackets until the carriage can slide across the frame without bowing the belt. When the belt is aligned, tighten the **M6 set screws** in the brackets to hold them in place.



Congratulations! You have completed Part One of this manual.

If you're setting up QuiltMotion on a quilting machine that is not yet assembled:

- Complete the steps in Part Two of your machine's instruction manual.
- If your machine manual is not broken into parts, follow the directions to install and align the machine wheels. Then continue onto Part Two of your QuiltMotion manual.

If you are installing QuiltMotion with a fully assembled quilting machine or a domestic sewing machine on a fully assembled top plate, continue to Part Two of your QuiltMotion manual.

If you will be using a domestic sewing machine and you have not yet assembled your top plate, do so now. Then continue onto Part Two of your QuiltMotion manual.