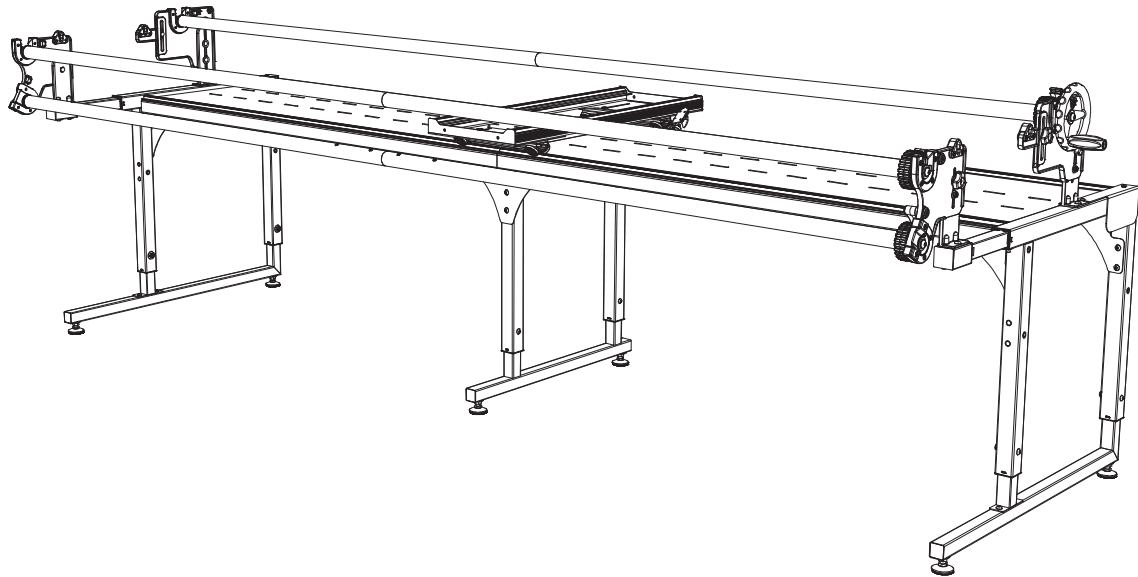


Continuum Frame

Task 5: Tension the Long Belt

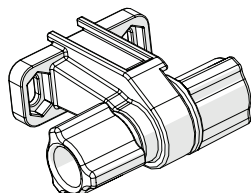


Note: These steps apply to all versions of the Continuum frame. The appearance of your frame may differ slightly to the one shown here.

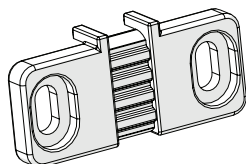
Task 5: Tension the Long Belt

Parts & Tools Needed:

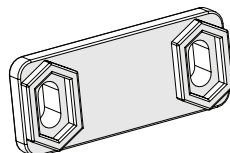
Belt Tensioner



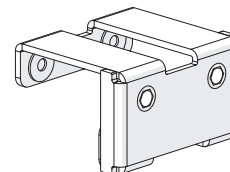
Back Belt Clamp



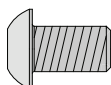
Front Belt Clamp



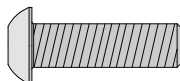
Continuum QM
Belt Bracket (x2)



SBHCS
M5 x 10 mm (x2)



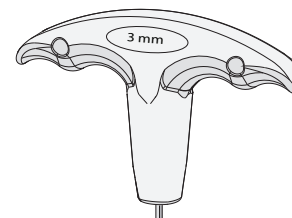
SBHCS
M5 x20 mm (x2)



L-Shaped Allen
Wrench 3 mm



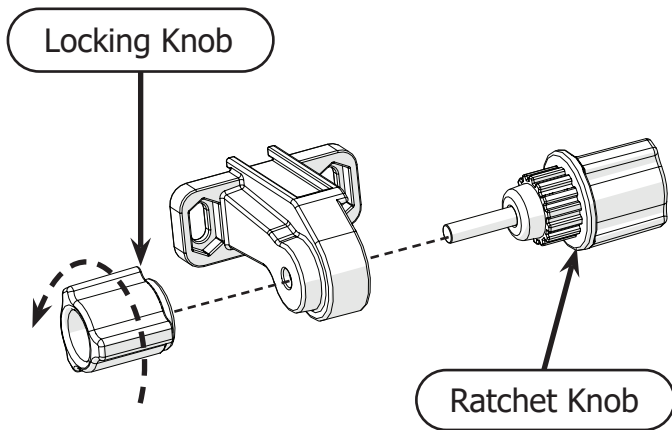
T-Handle Allen
Wrench 3 mm



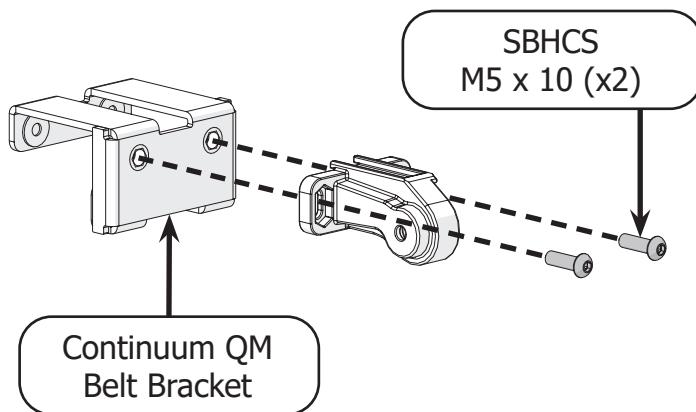
Instructions

The long belt allows QuiltMotion to move horizontally across the frame. Take the following steps to tension the long belt across the frame:

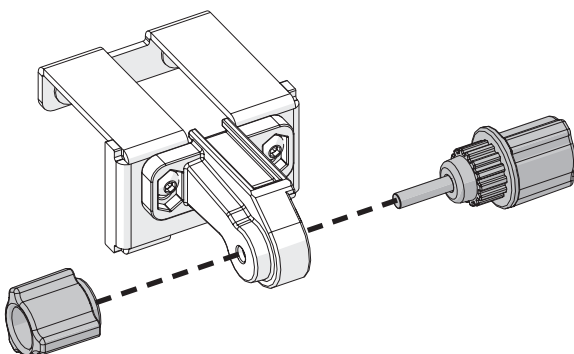
- 1 Turn the **locking knob** of the belt tensioner counter-clockwise to remove both the locking knob and the **ratchet knob**.



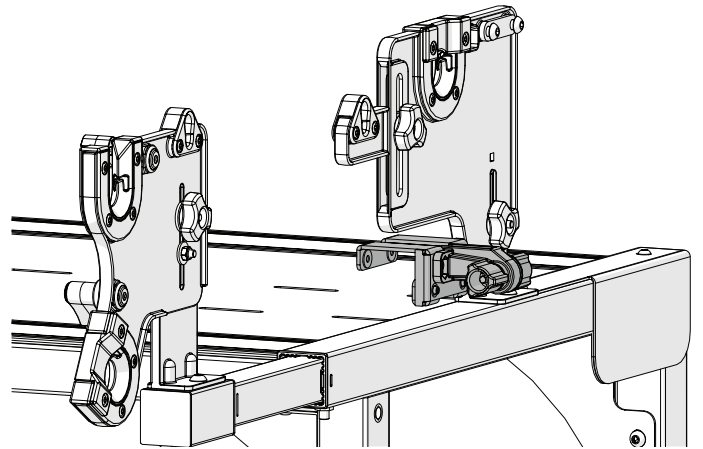
- 2 Use the two **M5 x 10 mm SBHCS** and the 3 mm Allen wrench to attach the tensioner to the **Continuum QM belt bracket**.



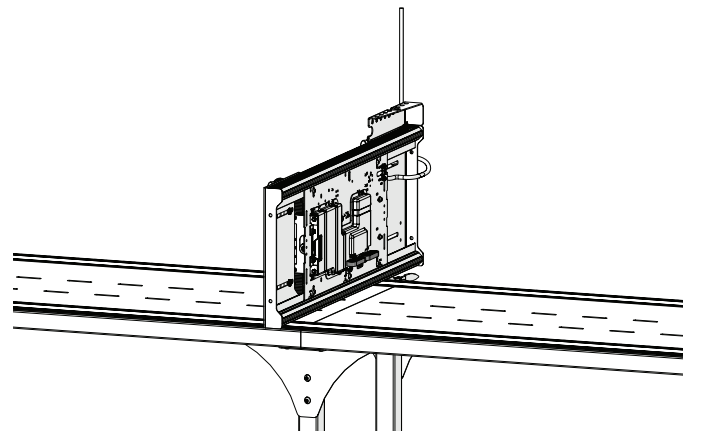
- 3 Reinstall the tensioner knobs.



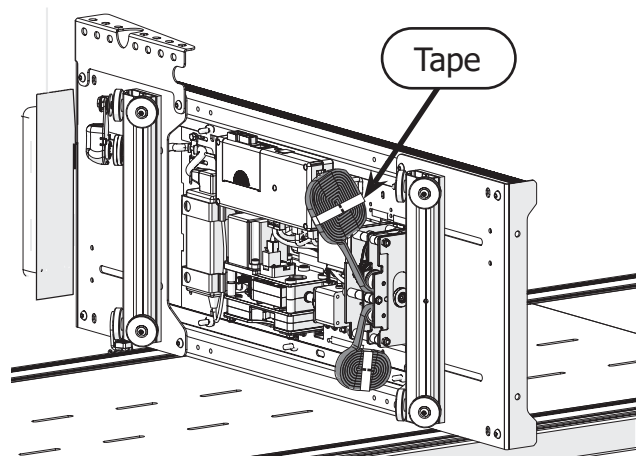
- 4 Place the bracket on the right side of the frame near the front. Do not tighten the set screws at this time.



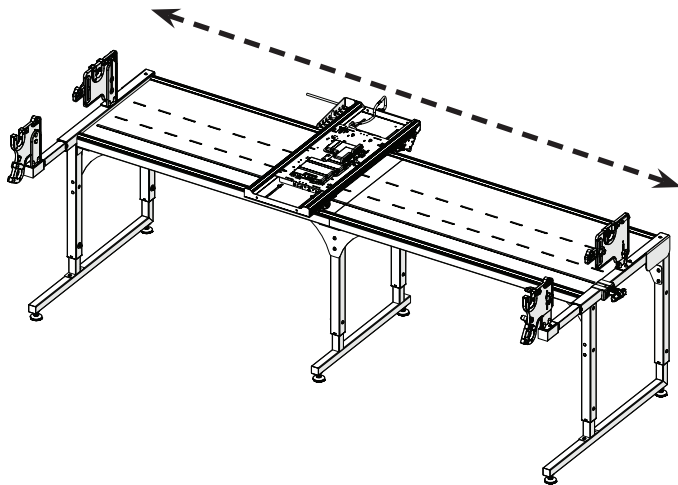
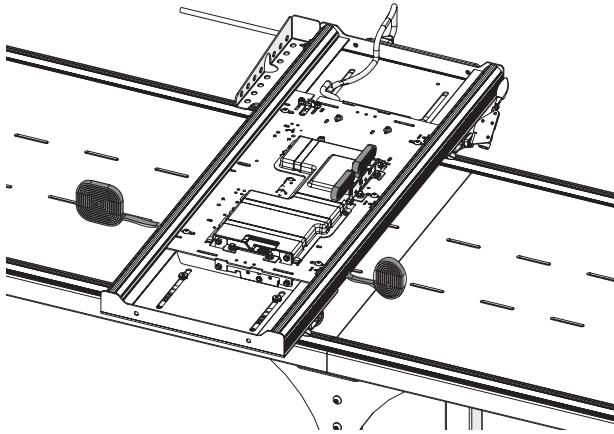
- 5 Place the bottom carriage on its right side on the frame. Do not align with the wheels with the tracks at this time.



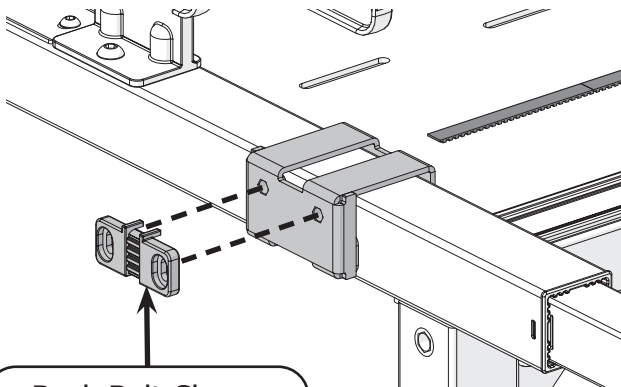
- 6 Cut the **tape** that is holding the long belt coils together and unroll several inches of each end of the belt.



- 7 Lay the carriage flat with the wheels on the tracks and finish unrolling the long belt.

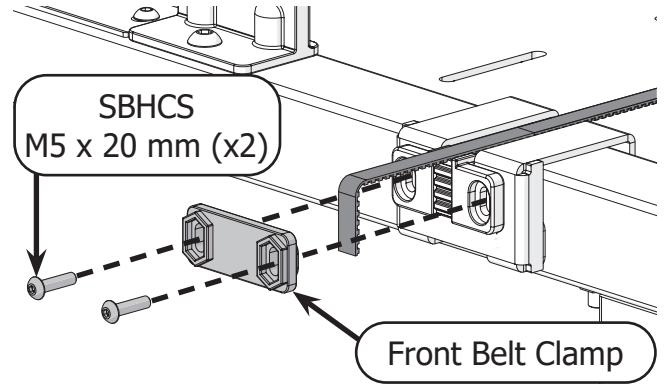


- 8 Place the other bracket on the left side of the frame near the front and hold the **back belt clamp** in place so that the holes align with the holes in the bracket.



Back Belt Clamp

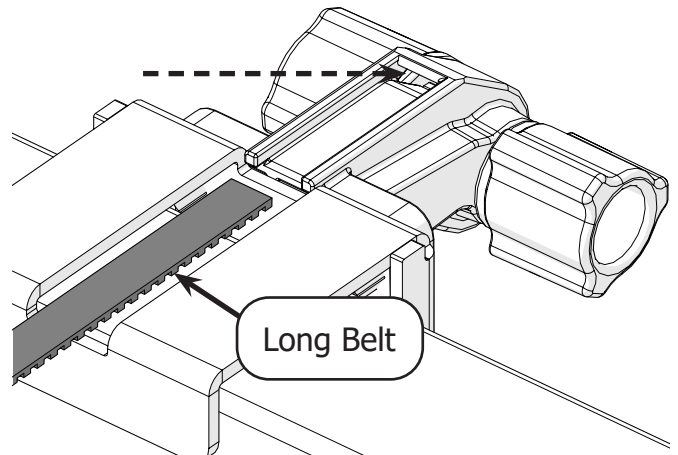
- 9 Drape the long belt over the back clamp and fasten in place with the **front belt clamp** and the two **M5 x 20 mm SBHCS**. Tighten with the 3 mm Allen wrench.



SBHCS
M5 x 20 mm (x2)

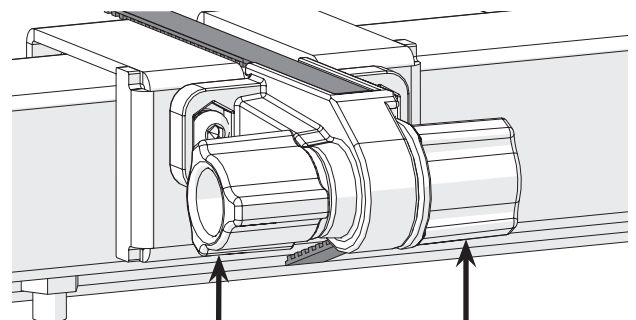
Front Belt Clamp

- 10 Feed the other end of the **long belt** into the belt tensioner on the right side of the frame.



Long Belt

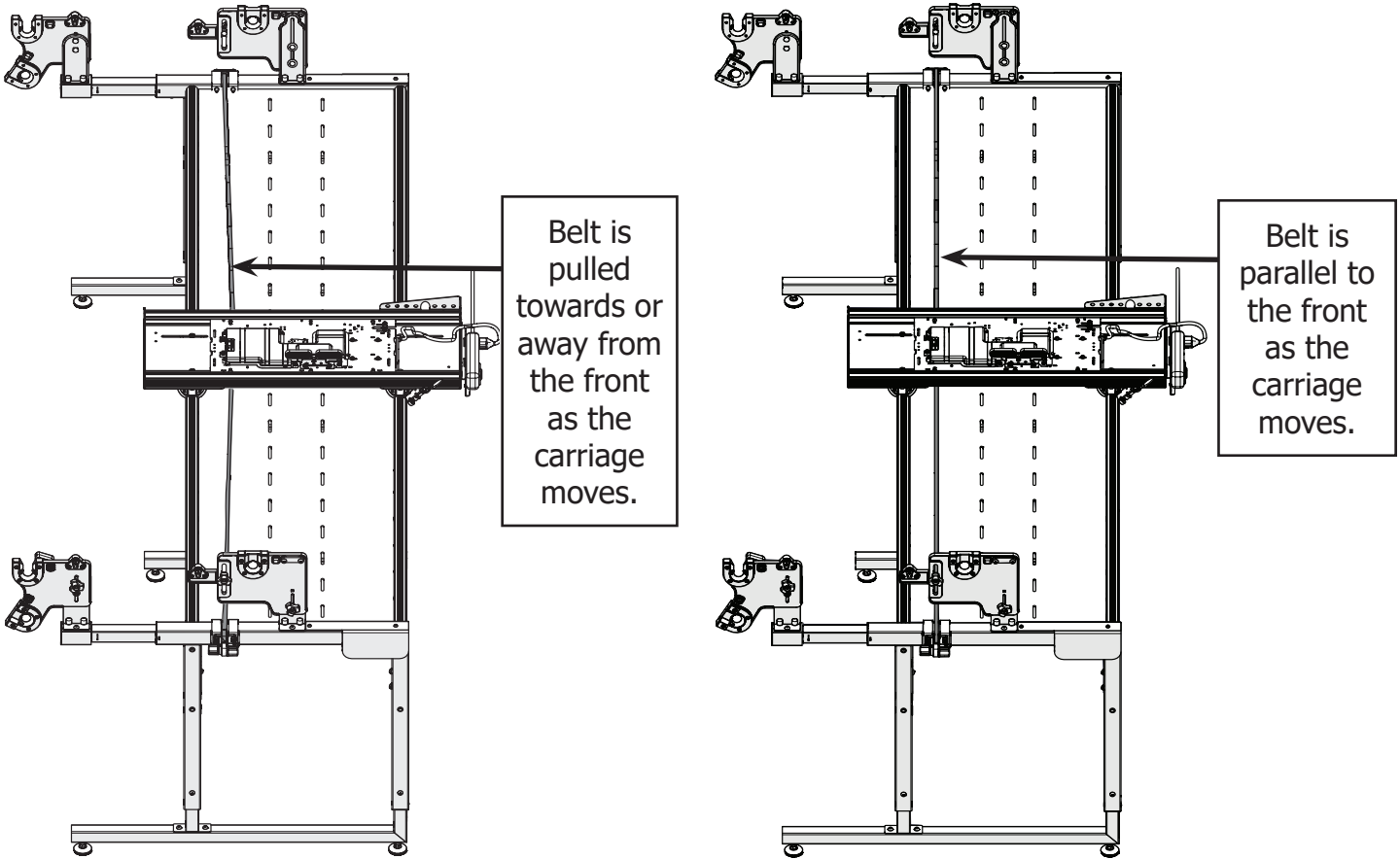
- 11 Turn the **ratchet knob** to pull the extra belt length through the tensioner until the belt is tight across the frame. Turn the **locking knob** to lock it in place.



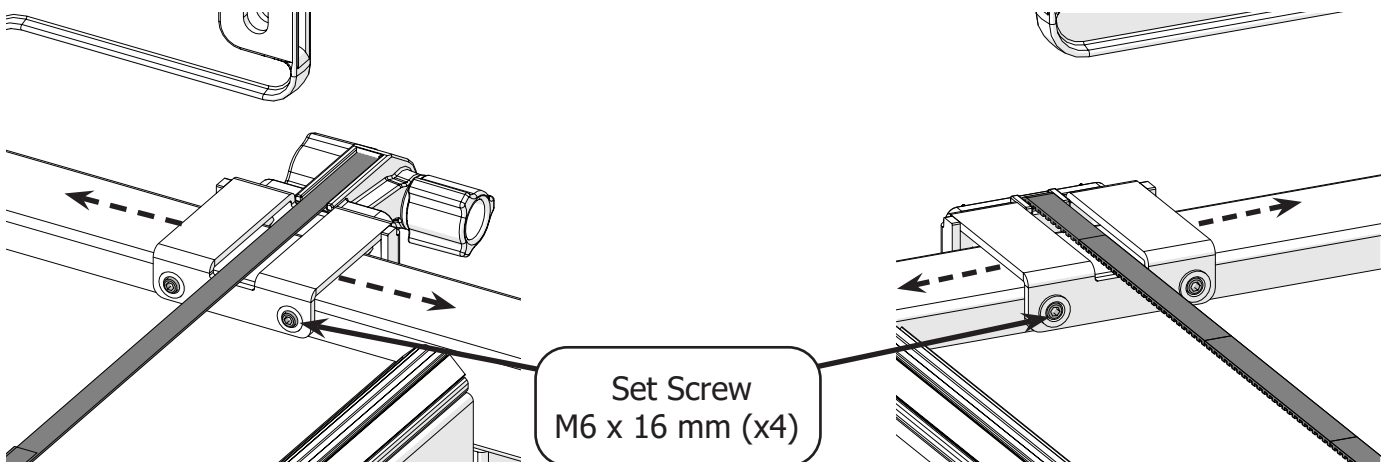
Locking Knob

Ratchet Knob

- 12 Once the belt is tight, slide the bottom carriage across the frame. Watch the belt closely for any bowing.



- 13 If the belt is bowing, adjust the two belt brackets along the side of the frame until the belt is straight. Use the L-shaped 3 mm Allen wrench to tighten the four **M6 x 16 mm set screws** that are pre-installed on the brackets and hold the brackets in place.



Congratulations! You have completed Part One of this manual.

If you're setting up QuiltMotion on a quilting machine that is not yet assembled:

- Complete the steps in Part Two of your machine's instruction manual.
- If your machine manual is not broken into parts, follow the directions to install and align the machine wheels. Then continue onto Part Two of your QuiltMotion manual.

If you are installing QuiltMotion with a fully assembled quilting machine or a domestic sewing machine on a fully assembled top plate, continue to Part Two of your QuiltMotion manual.

If you will be using a domestic sewing machine and you have not yet assembled your top plate, do so now. Then continue onto Part Two of your QuiltMotion manual.