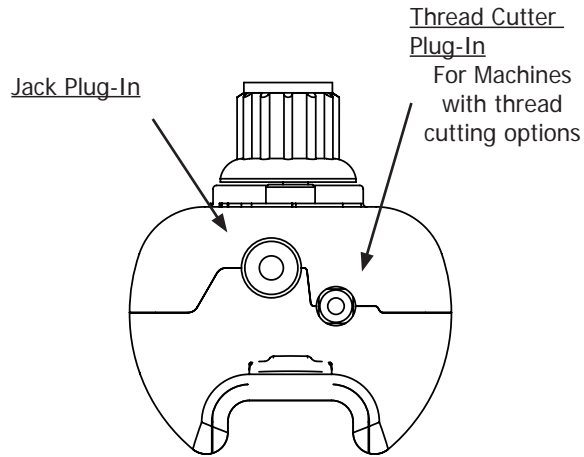


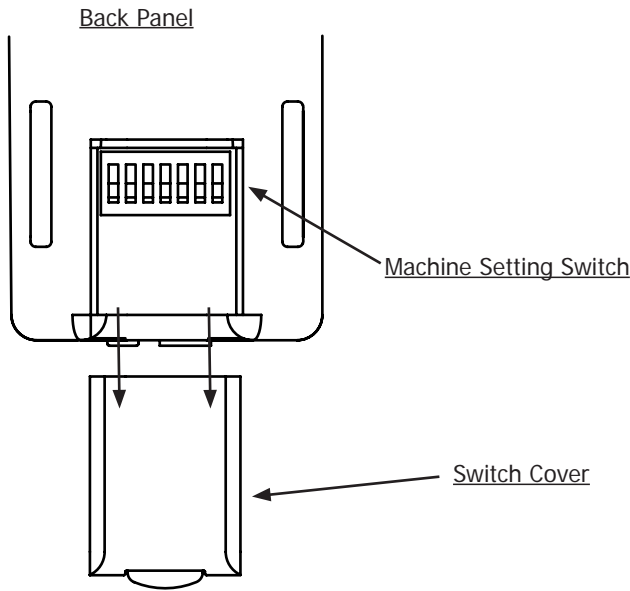
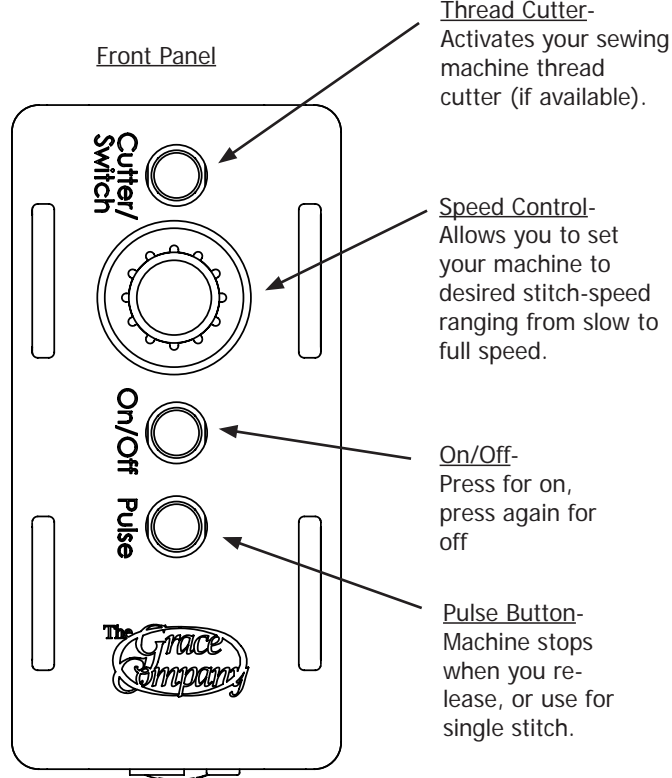
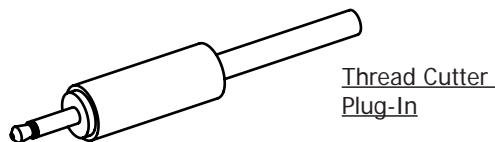
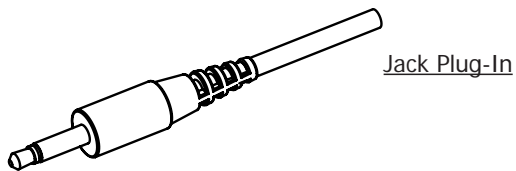
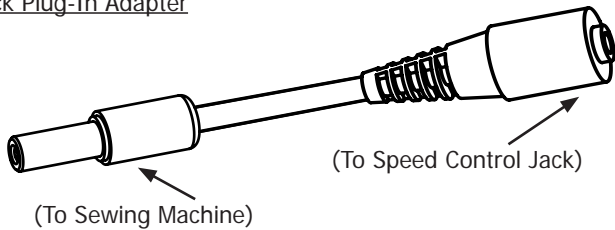
Grace Speed Control

The Grace Speed Control is designed to work with almost any sewing machine.

Connecting to your sewing machine:



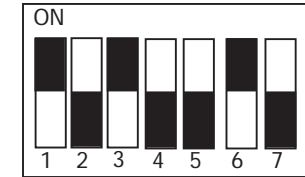
Jack Plug-In Adapter



For Technical Assistance please contact:

The Grace Company
1-800-264-0644

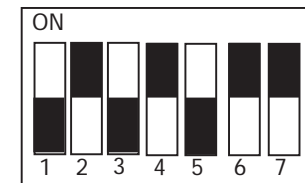
Setting 1



Juki / Singer

black indicates switch position

Setting 2

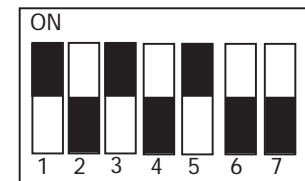


Baby Lock / Brother

Janome / New Home

black indicates switch position

Setting 3



Bernina / Pfaff

black indicates switch position

The Grace Speed Control Switch is compatible with most DC-powered machines. DC-powered machines usually have a separate foot pedal plug in and power cord plug in.